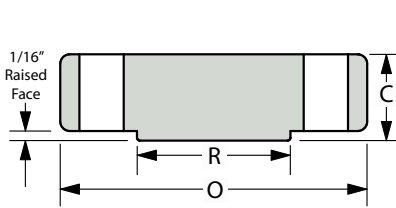
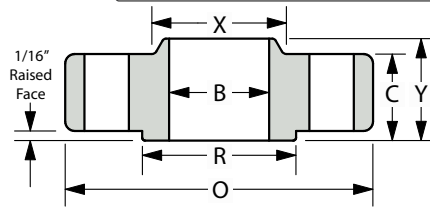


CLASS 150#

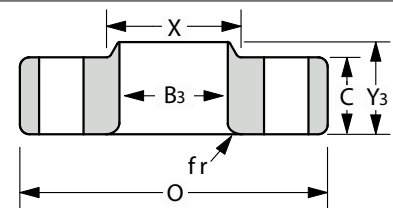
ANSI B16.5 • Standard Forged Flanges
Dimensional Data



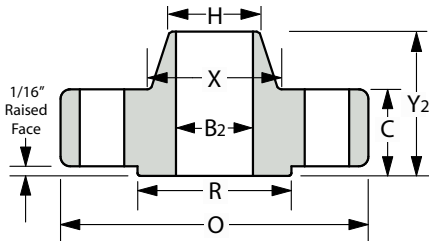
BLIND (BL)



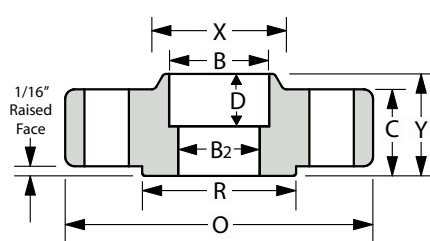
SLIP-ON (SO)



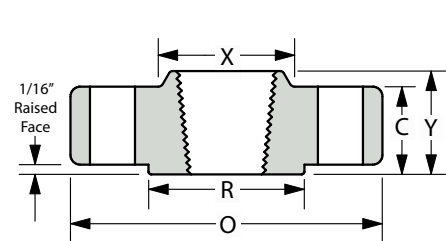
LAP JOINT (L J)



WELD NECK (WN)



SOCKET WELD (SW)



THREADED (TH)

Nominal Pipe Size	O (Outside Diameter)	R (Raised Face)	X (Hub Dia.)	C (General Thickness)	Y (Overall Length)	Y2	Y3	B (Inside Diameter)	B2	B3	fr (fillet radius)	D	H (Dia. bevel hub)	# of Holes - Diameter	Bolt Circle Dia.
1/2"	3.50	1.38	1.19	0.44	0.62	1.88	0.62	0.88	This dimension is determined by the pipe schedule and its corresponding inside diameter.	0.90	0.12	0.38	0.84	4 - 0.62	2.38
3/4"	3.88	1.69	1.50	0.50	0.62	2.06	0.62	1.09		1.11	0.12	0.44	1.05	4 - 0.62	2.75
1"	4.25	2.00	1.94	0.56	0.69	2.19	0.69	1.36		1.38	0.12	0.50	1.32	4 - 0.62	3.12
1-1/4"	4.62	2.50	2.31	0.62	0.81	2.25	0.81	1.70		1.72	0.19	0.56	1.66	4 - 0.62	3.50
1-1/2"	5.00	2.88	2.56	0.68	0.88	2.44	0.88	1.95		1.97	0.25	0.62	1.90	4 - 0.62	3.88
2"	6.00	3.62	3.06	0.75	1.00	2.50	1.00	2.44		2.46	0.31	0.69	2.38	4 - 0.75	4.75
2-1/2"	7.00	4.12	3.56	0.88	1.12	2.75	1.12	2.94		2.97	0.31	0.75	2.88	4 - 0.75	5.50
3"	7.50	5.00	4.25	0.94	1.19	2.75	1.19	3.57		3.60	0.38	0.81	3.50	4 - 0.75	6.00
3-1/2"	8.50	5.50	4.81	0.94	1.25	2.81	1.25	4.07		4.10	0.38	0.88	4.00	8 - 0.75	7.00
4"	9.00	6.19	5.31	0.94	1.31	3.00	1.31	4.57		4.60	0.44	0.94	4.50	8 - 0.75	7.50
5"	10.00	7.31	6.44	0.94	1.44	3.50	1.44	5.66		5.69	0.44	0.94	5.56	8 - 0.88	8.50
6"	11.00	8.50	7.56	1.00	1.56	3.50	1.56	6.72		6.75	0.50	1.06	6.63	8 - 0.88	9.50
8"	13.50	10.62	9.69	1.12	1.75	4.00	1.75	8.72		8.75	0.50	1.25	8.63	8 - 0.88	11.75
10"	16.00	12.75	12.00	1.19	1.94	4.00	1.94	10.88		10.92	0.50	1.31	10.75	12 - 1.00	14.25
12"	19.00	15.00	14.38	1.25	2.19	4.50	2.19	12.88		12.92	0.50	1.56	12.75	12 - 1.00	17.00
14"	21.00	16.25	15.75	1.38	2.25	5.00	3.12	14.14		14.18	0.50	1.63	14.00	12 - 1.12	18.75
16"	23.50	18.50	18.00	1.44	2.50	5.00	3.44	16.16	16.19	0.50	1.75	16.00	16 - 1.12	21.25	
18"	25.00	21.00	19.88	1.56	2.69	5.50	3.81	18.18	18.20	0.50	1.94	18.00	16 - 1.25	22.75	
20"	27.50	23.00	22.00	1.69	2.88	5.69	4.06	20.20	20.25	0.50	2.13	20.00	20 - 1.25	25.00	
22"	29.50	25.25	24.25	1.81	3.13	5.88	4.25	22.22	22.25	0.50	2.38	22.00	20 - 1.38	27.25	
24"	32.00	27.25	26.12	1.88	3.25	6.00	4.38	24.25	24.25	0.50	2.50	24.00	20 - 1.38	29.50	

1. The C and Y dimensions include the 1/16" raised face for the 150# and 300# weight classes.

2. Tolerances are standard as per ANSI B 16.5

3. The Y3 dimension is the length for a "true" lap joint, however, it is usually accepted to make these to a standard slip-on length.

4. All shown dimensions are in inches. 5. Bolts 1/8" smaller than hole dia.