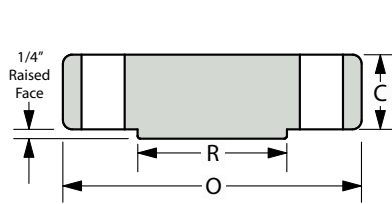
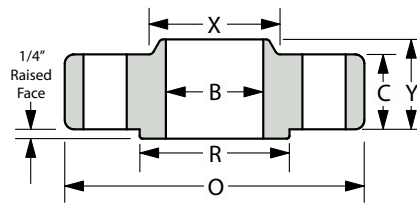


CLASS 2500#

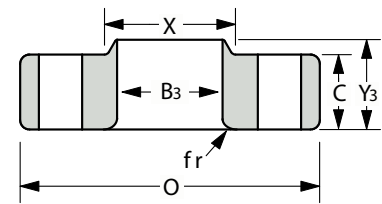
ANSI B16.5 • Standard Forged Flanges
Dimensional Data



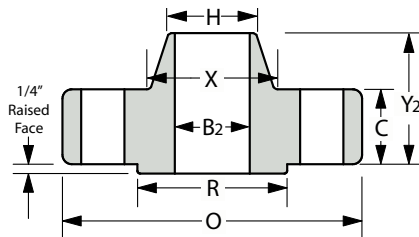
BLIND (BL)



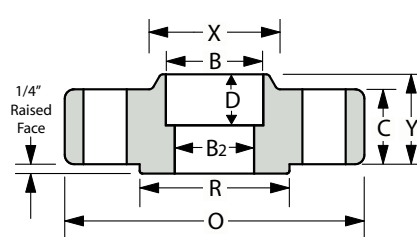
SLIP-ON (SO)



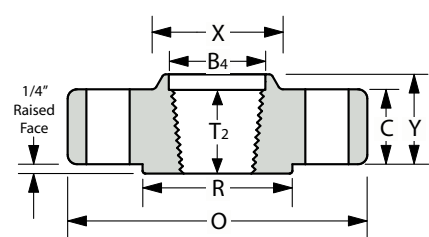
LAP JOINT (L J)



WELD NECK (WN)



SOCKET WELD (SW)



THREADED (TH)

Nom. Pipe Size	O (Outside Diameter)	R (Raised Face)	X (Hub Dia.)	C	T ₂ (Min. Thread Length)	Y (Overall Length)	Y ₂	Y ₃	B (Inside Dia.)	B ₂	B ₃	B ₄	fr	D	H (bevel hub)	# of Holes - Diameter	Bolt Circle Dia.
1/2"	5.25	1.38	1.69	1.19	1.13	1.56	2.88	1.56	0.88		0.90	0.93	0.13	0.38	0.84	4-0.88	3.50
3/4"	5.50	1.69	2.00	1.25	1.25	1.69	3.13	1.69	1.09	This dimension is determined by the pipe schedule and its corresponding inside diameter.	1.11	1.14	0.13	0.44	1.05	4-0.88	3.75
1"	6.25	2.00	2.25	1.38	1.38	1.88	3.50	1.88	1.36		1.38	1.41	0.13	0.50	1.32	4-1.00	4.25
1-1/4	7.25	2.50	2.88	1.50	1.50	2.06	3.75	2.06	1.70		1.72	1.75	0.18	0.56	1.66	4-1.13	5.13
1-1/2	8.00	2.88	3.13	1.75	1.75	2.38	4.38	2.38	1.95		1.97	1.99	0.25	0.63	1.90	4-1.25	5.75
2	9.25	3.62	3.75	2.00	2.00	2.75	5.00	2.75	2.44		2.46	2.50	0.31	0.69	2.38	8-1.13	6.75
2-1/2	10.50	4.12	4.50	2.25	2.25	3.13	5.63	3.13	2.94		2.97	3.00	0.31	0.75	2.88	8-1.25	7.75
3"	12.00	5.00	5.25	2.63	2.50	3.63	6.63	3.63	3.57		3.60	3.63	0.37	*	3.50	8-1.38	9.00
4"	14.00	6.19	6.50	3.00	2.75	4.25	7.50	4.25	4.57		4.60	4.63	0.44	*	4.50	8-1.63	10.75
5"	16.50	7.31	8.00	3.63	3.00	5.13	9.00	5.13	5.66		5.69	5.69	0.44	*	5.56	8-1.88	12.75
6"	19.00	8.50	9.25	4.25	3.25	6.00	10.75	6.00	6.72		6.75	6.75	0.50	*	6.63	8-2.13	14.50
8"	21.75	10.62	12.00	5.00	3.75	7.00	12.50	7.00	8.72		8.75	8.75	0.50	*	8.63	12-2.13	17.25
10"	26.50	12.75	14.75	6.50	4.25	9.00	16.50	9.00	10.88		10.92	10.92	0.50	*	10.75	12-2.63	21.25
12"	30.00	15.00	17.38	7.25	4.75	10.00	18.25	10.00	12.88	12.92	12.92	0.50	*	12.75	12-2.88	24.38	

- The C and Y dimensions do not include the 1/4" raised face for the 600# and above weight classes.
- Tolerances are standard as per ANSI B 16.5
- The Y₃ dimension is the length for a "true" lap joint, however, it is usually accepted to make these to a standard slip-on length.

- All shown dimensions are in inches.
5. Bolts 1/8" smaller than hole dia.
5. Columns marked * have no corresponding value in ASME code, therefore, have been left blank.
6. ASME does not list the socket weld type flange as an option for 2500#.
7. ASME Code limits dimensions to 12" Nominal Pipe Size.