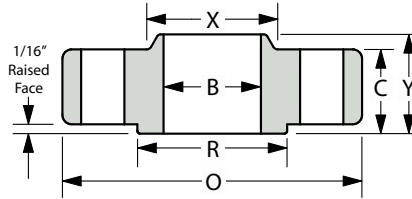
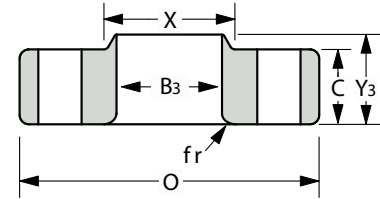


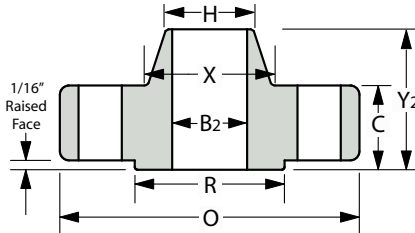
BLIND (BL)



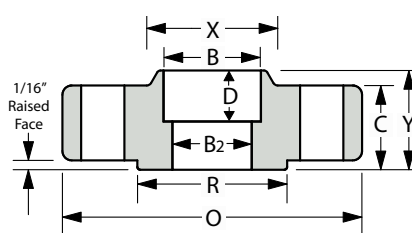
SLIP-ON (SO)



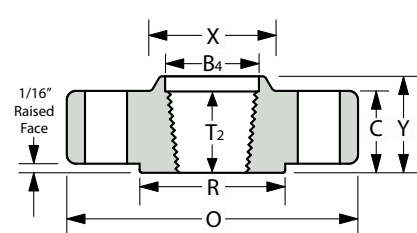
LAP JOINT (L J)



WELD NECK (WN)



SOCKET WELD (SW)



THREADED (TH)

Nom. Pipe Size	O (Outside Diameter)	R (Raised Face)	X (Hub Dia.)	C	T2 (Min. Thread Length)	Y (Overall Length)	Y2	Y3	B (Inside Dia.)	B2	B3	B4	fr	D	H (bevel hub)	# of Holes - Diameter	Bolt Circle Dia.
1/2"	3.75	1.38	1.50	0.56	0.62	0.88	2.06	0.88	0.88	This dimension is determined by the pipe schedule and its corresponding inside diameter.	0.90	0.93	0.12	0.38	0.84	4-0.62	2.62
3/4"	4.62	1.69	1.88	0.62	0.62	1.00	2.25	1.00	1.09		1.11	1.14	0.12	0.44	1.05	4-0.75	3.25
1"	4.88	2.00	2.12	0.69	0.69	1.06	2.44	1.06	1.36		1.38	1.41	0.12	0.50	1.32	4-0.75	3.50
1-1/4	5.25	2.50	2.50	0.75	0.81	1.06	2.56	1.06	1.70		1.72	1.75	0.19	0.56	1.66	4-0.75	3.88
1-1/2	6.12	2.88	2.75	0.81	0.88	1.19	2.69	1.19	1.95		1.97	1.99	0.25	0.62	1.90	4-0.88	4.50
2	6.50	3.62	3.31	0.88	1.12	1.31	2.75	1.31	2.44		2.46	2.50	0.31	0.69	2.38	8-0.75	5.00
2-1/2	7.50	4.12	3.94	1.00	1.25	1.50	3.00	1.50	2.94		2.97	3.00	0.31	0.75	2.88	8-0.88	5.88
3"	8.25	5.00	4.62	1.12	1.25	1.69	3.12	1.69	3.57		3.60	3.63	0.38	0.81	3.50	8-0.88	6.62
3-1/2	9.00	5.50	5.25	1.19	1.44	1.75	3.19	1.75	4.07		4.10	4.13	0.38	0.81	4.00	8-0.88	7.25
4"	10.00	6.19	5.75	1.25	1.44	1.88	3.38	1.88	4.57		4.60	4.63	0.44	0.81	4.50	8-0.88	7.88
5"	11.00	7.31	7.00	1.38	1.69	2.00	3.88	2.00	5.66		5.69	5.69	0.44	0.81	5.56	8-0.88	9.25
6"	12.50	8.50	8.12	1.44	1.81	2.06	3.88	2.06	6.72		6.75	6.75	0.50	0.81	6.63	12-0.88	10.62
8"	15.00	10.62	10.25	1.62	2.00	2.44	4.38	2.44	8.72		8.75	8.75	0.50	0.81	8.63	12-1.00	13.00
10"	17.50	12.75	12.62	1.88	2.19	2.62	4.62	3.75	10.88		10.92	10.92	0.50	0.81	10.75	16-1.12	15.25
12"	20.50	15.00	14.75	2.00	2.38	2.88	5.12	4.00	12.88		12.92	12.92	0.50	0.81	12.75	16-1.25	17.75
14"	23.00	16.25	16.75	2.12	2.50	3.00	5.62	4.38	14.14		14.18	14.18	0.50	0.81	14.00	20-1.25	20.25
16"	25.50	18.50	19.00	2.25	2.69	3.25	5.75	4.75	16.16		16.19	16.19	0.50	0.81	16.00	20-1.38	22.50
18"	28.00	21.00	21.00	2.38	2.75	3.50	6.25	5.12	18.18		18.20	18.19	0.50	0.81	18.00	24-1.38	24.75
20"	30.50	23.00	23.12	2.50	2.88	3.75	6.38	5.50	20.20	20.25	20.19	0.50	0.81	20.00	24-1.38	27.00	
22"	33.00	25.25	25.25	2.63	3.13	4.00	6.50	5.75	22.22	22.25	22.19	0.50	0.81	22.00	24-1.63	29.25	
24"	36.00	27.25	27.62	2.75	3.25	4.19	6.62	6.00	24.25	24.25	24.19	0.50	0.81	24.00	24-1.62	32.00	

1. The C and Y dimensions include the 1/16" raised face for the 150# and 300# weight classes.
2. Tolerances are standard as per ANSI B 16.5

3. The Y3 dimension is the length for a "true" lap joint, however, it is usually accepted to make these to a standard slip-on length.
4. All shown dimensions are in inches. 5. Bolts 1/8" smaller than hole dia.